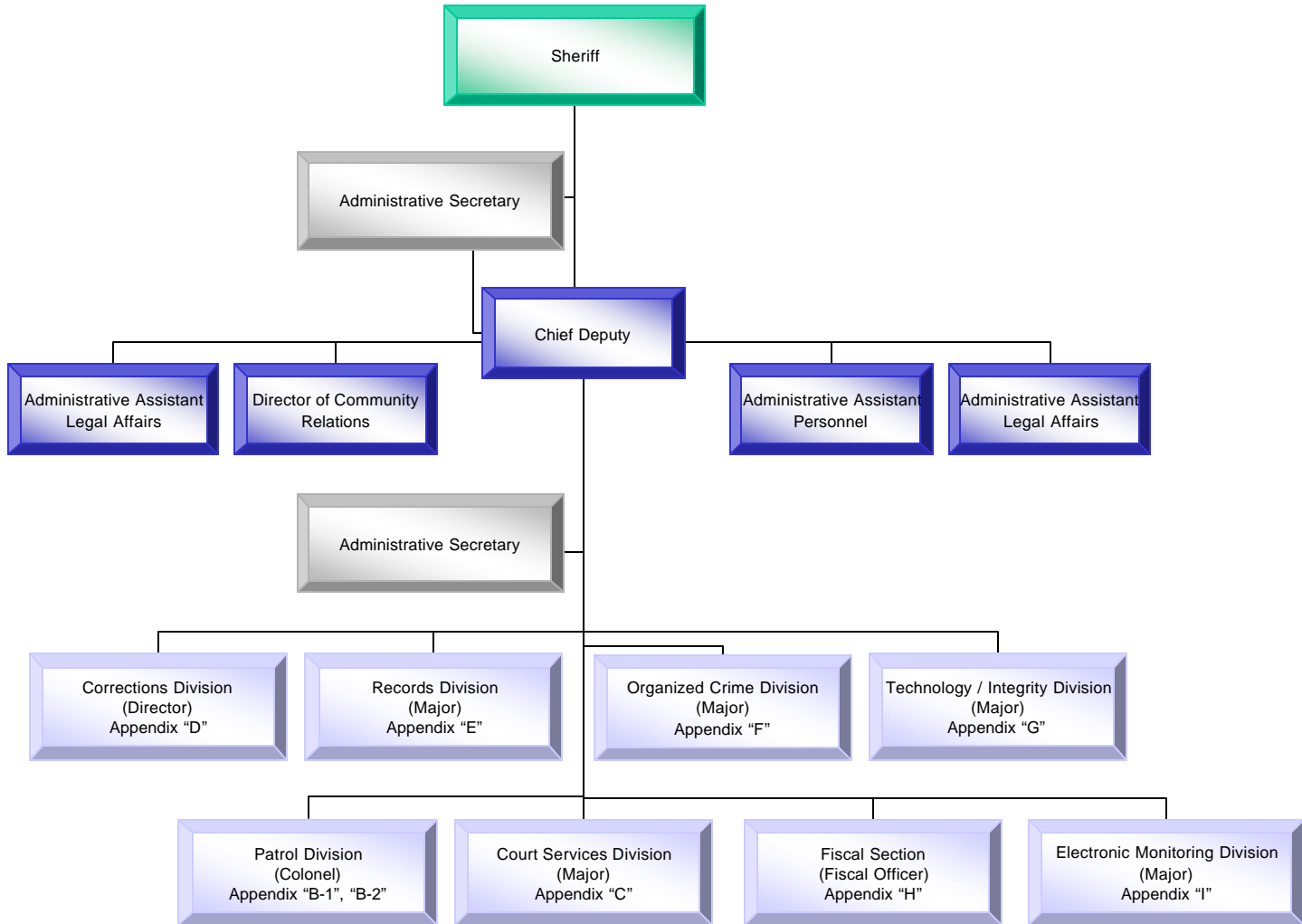


ORGANIZATIONAL STRUCTURE CHART

Hamilton County Sheriff's Office

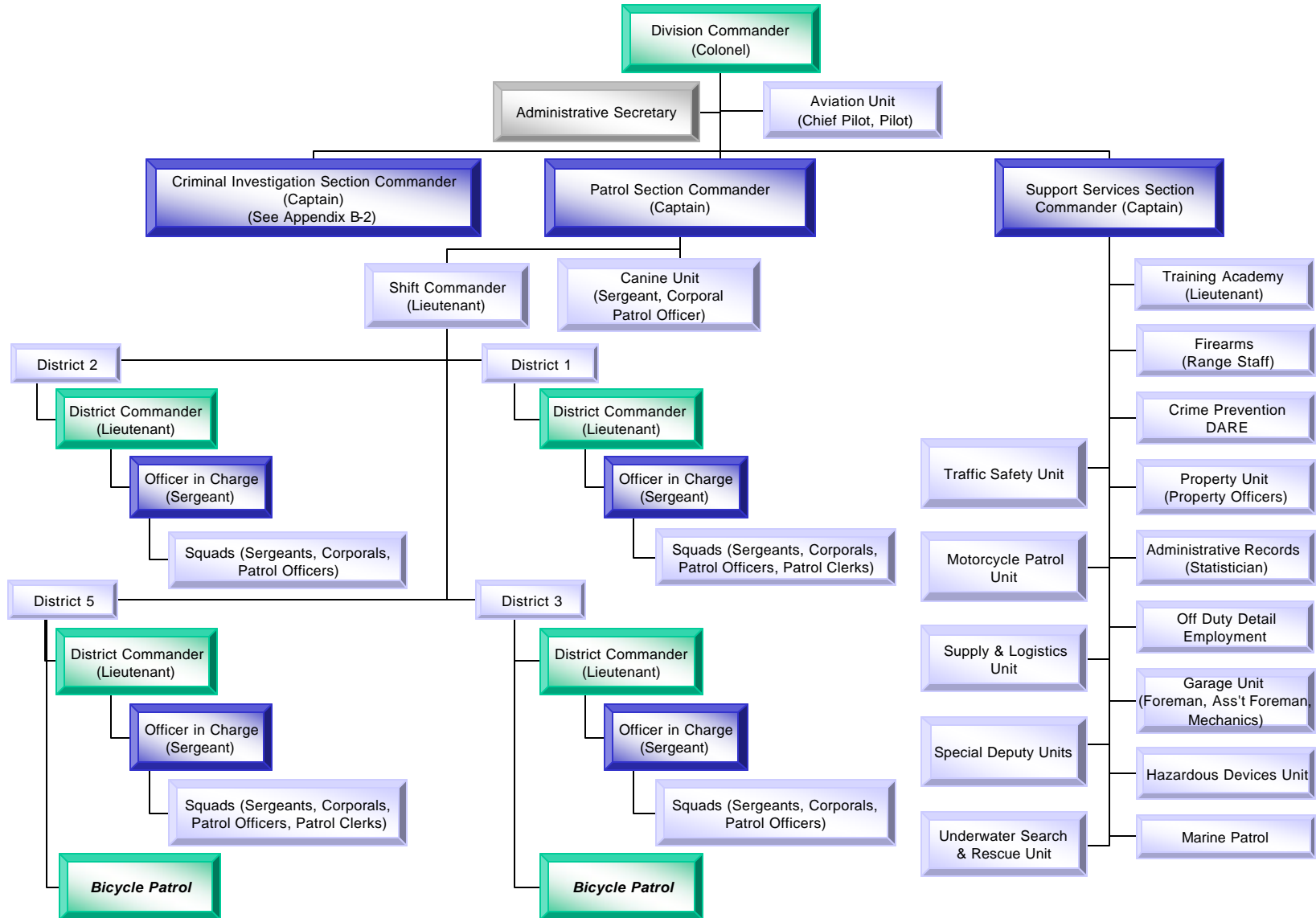
Departmental / Administrative Division



ORGANIZATIONAL STRUCTURE CHART

Hamilton County Sheriff's Office

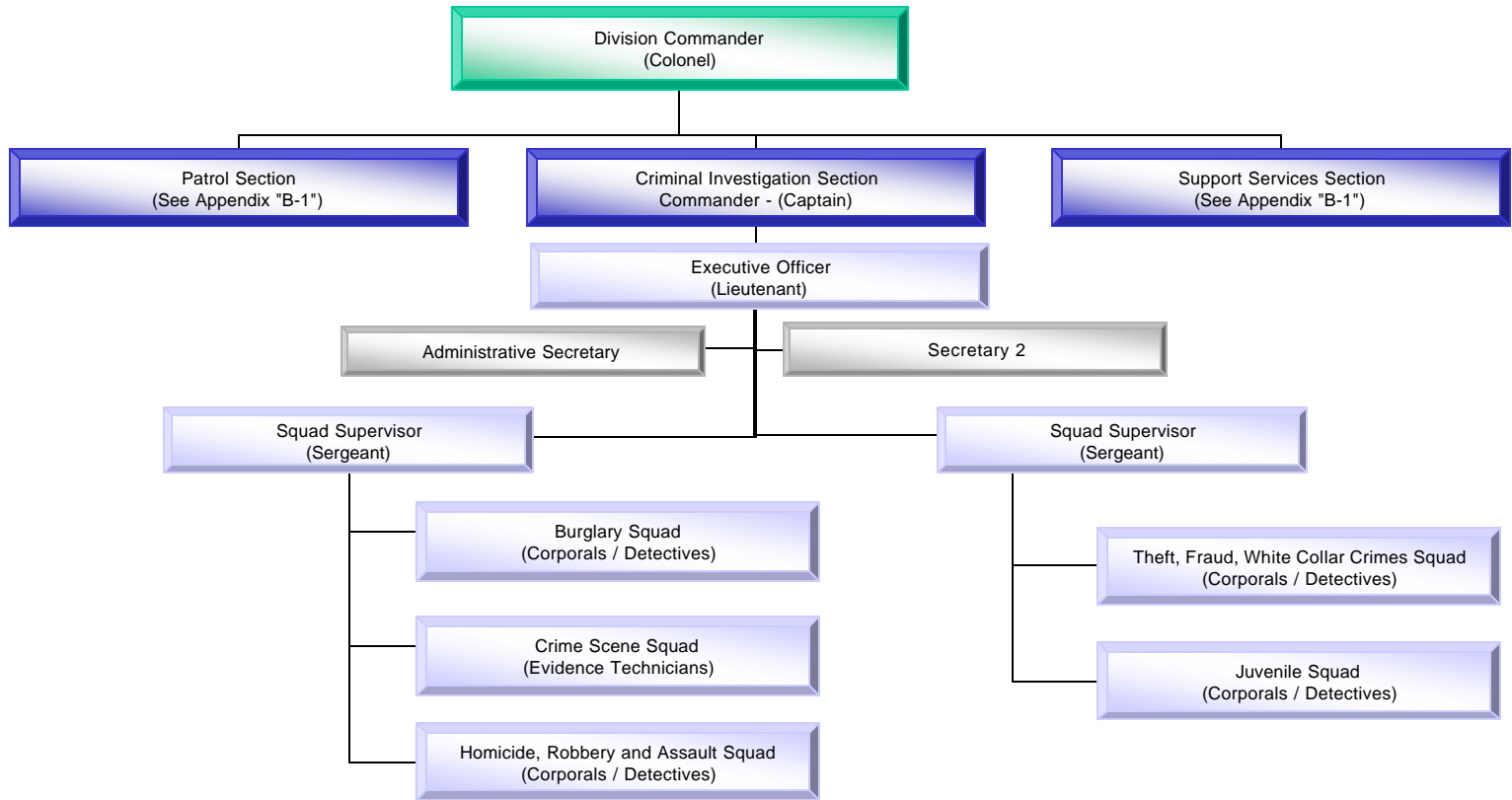
Patrol Division - (Patrol and Support Services Sections) - Appendix "B-1"



ORGANIZATIONAL STRUCTURE CHART

Hamilton County Sheriff's Office

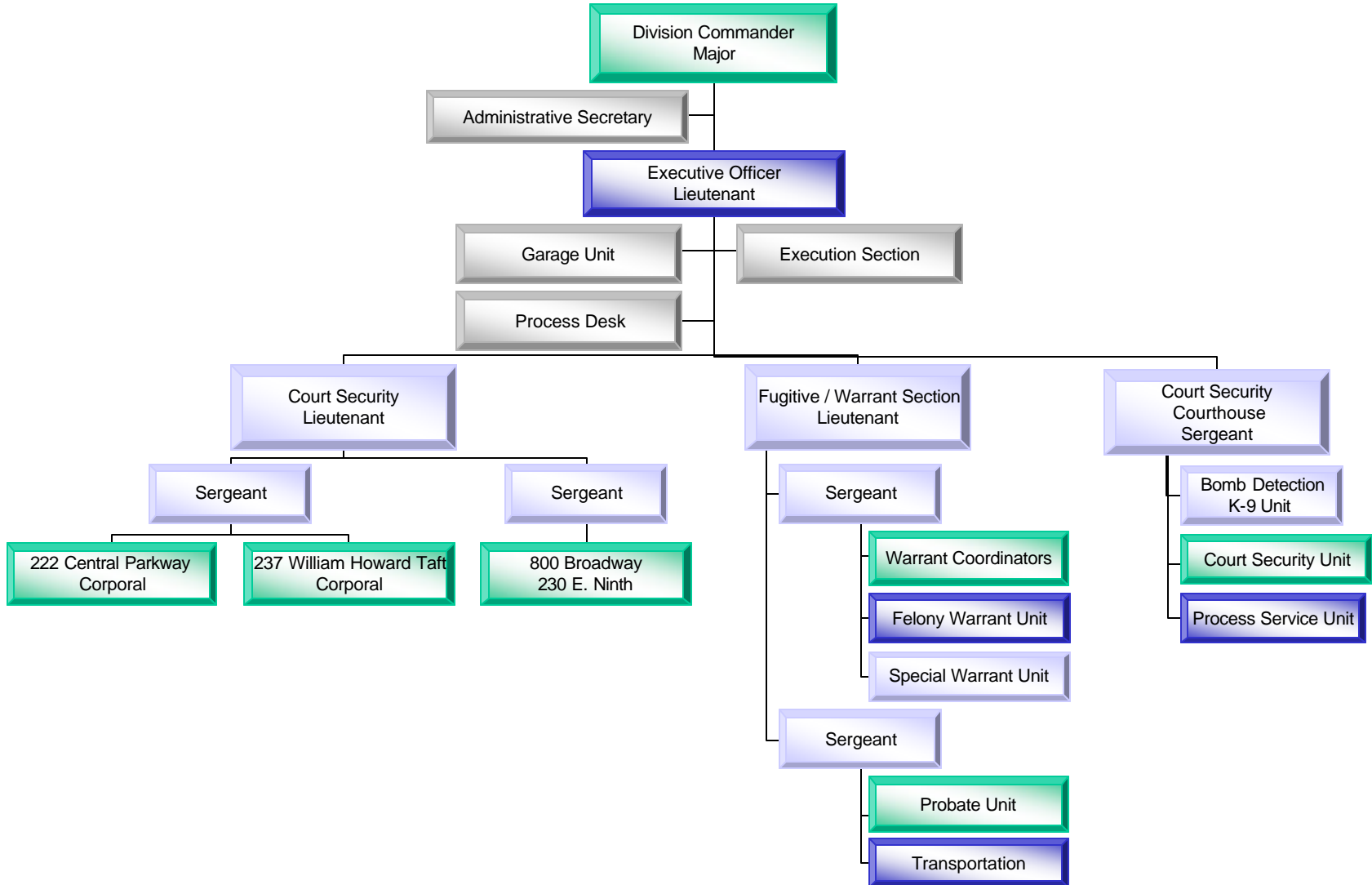
Patrol Division - (Criminal Investigation Section) - Appendix "B-2"



ORGANIZATIONAL STRUCTURE CHART

Hamilton County Sheriff's Office

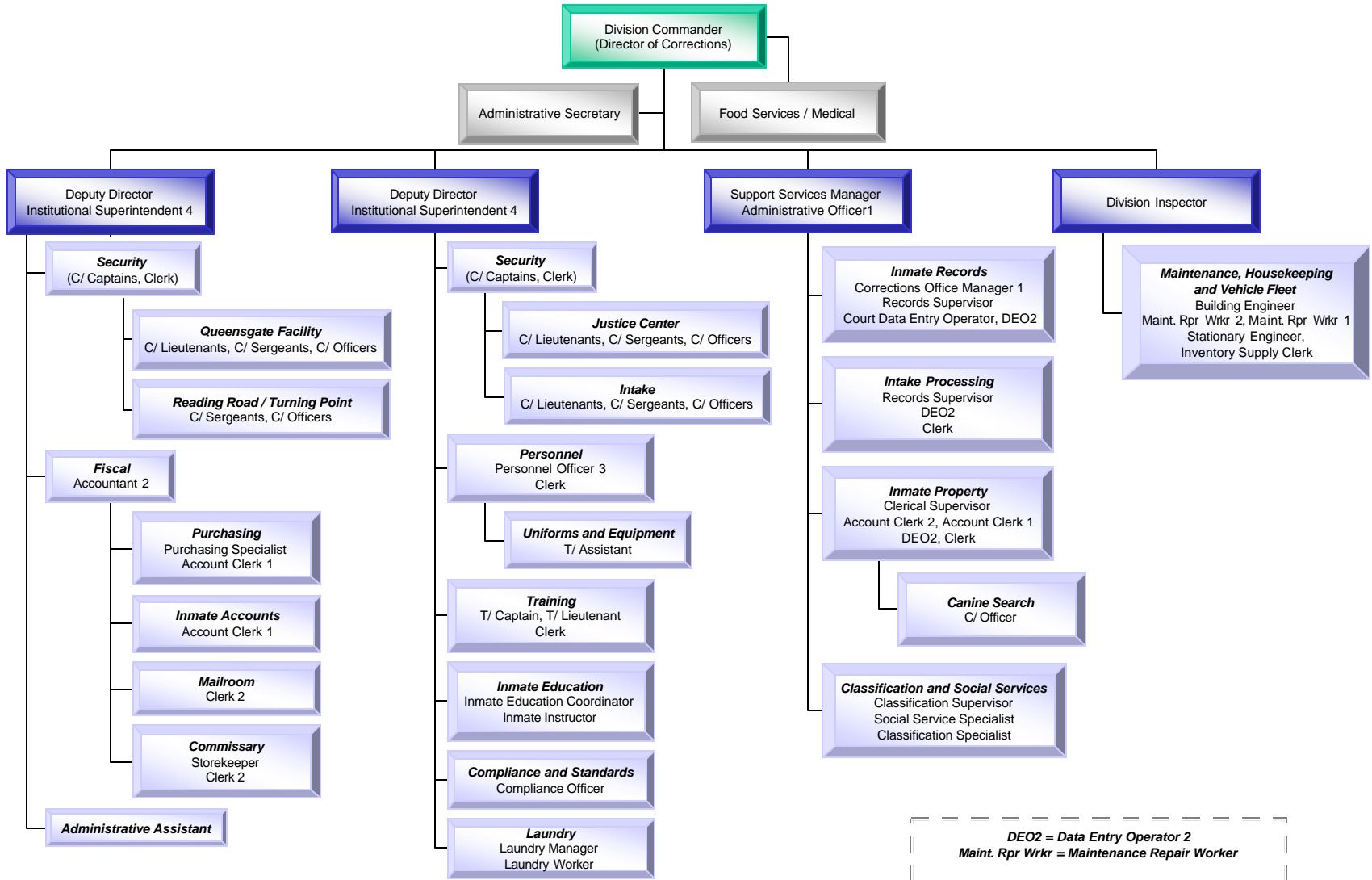
Court Services Division - Appendix "C"



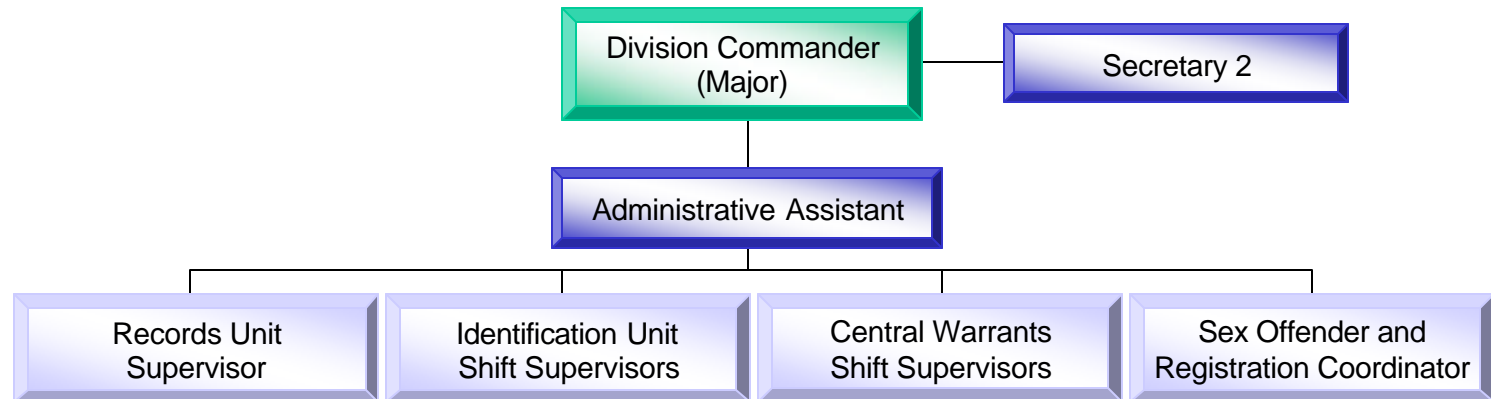
ORGANIZATIONAL STRUCTURE CHART

Hamilton County Sheriff's Office

Corrections Division - Appendix "D"



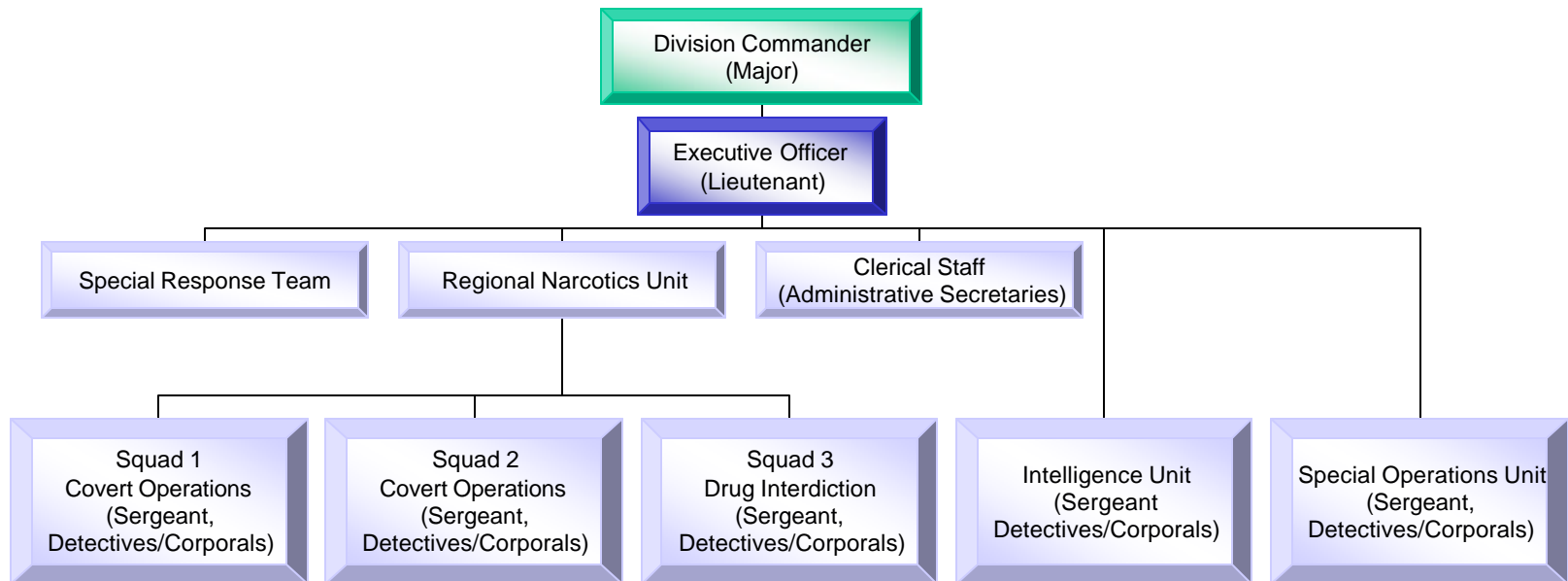
ORGANIZATIONAL STRUCTURE CHART
Hamilton County Sheriff's Office
Records Division - Appendix "E"



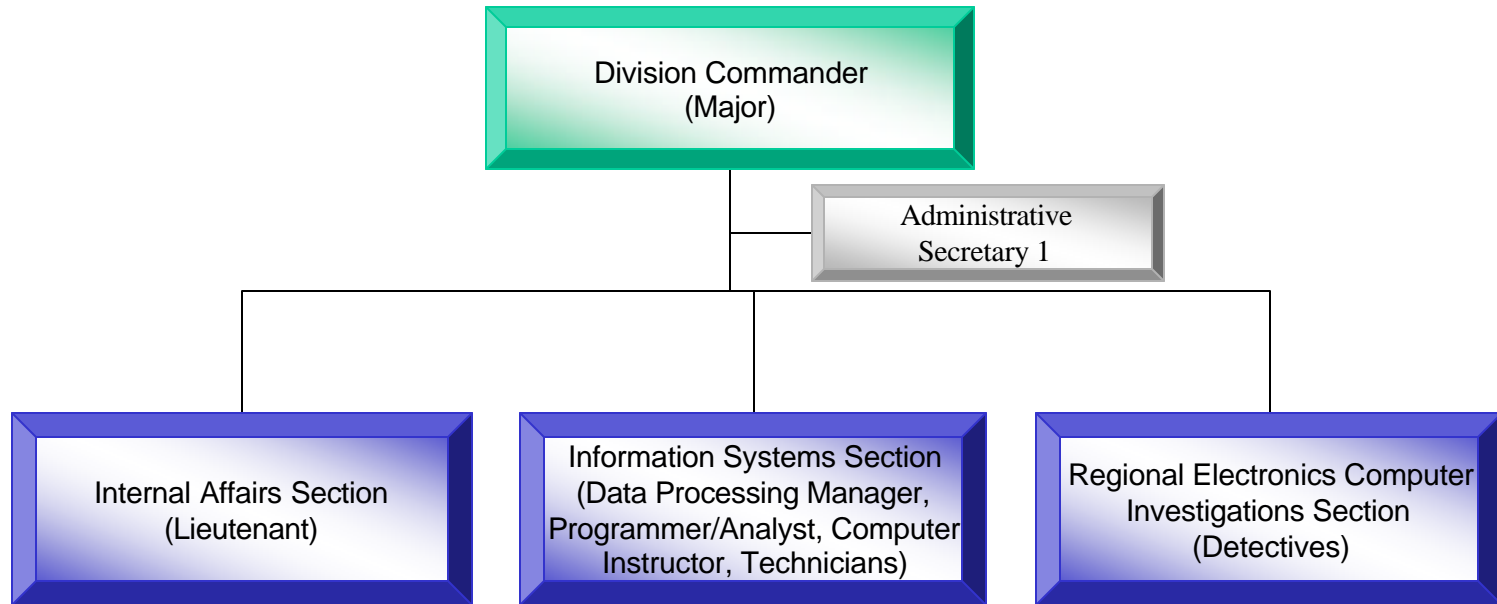
ORGANIZATIONAL STRUCTURE CHART

Hamilton County Sheriff's Office

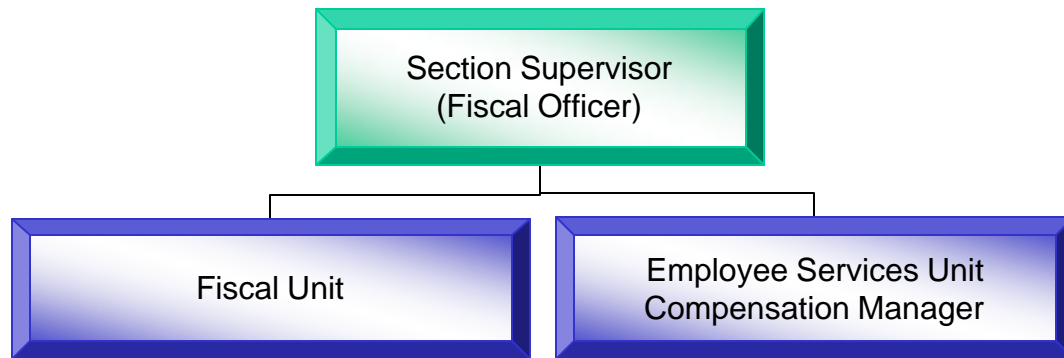
Organized Crime Division - Appendix "F"



ORGANIZATIONAL STRUCTURE CHART
Hamilton County Sheriff's Office
Technology / Integrity Division - Appendix "G"



ORGANIZATIONAL STRUCTURE CHART
Hamilton County Sheriff's Office
Fiscal Section - Appendix "H"



ORGANIZATIONAL STRUCTURE CHART
Hamilton County Sheriff's Office
Electronic Monitoring Division – Appendix "I"

